



# Route from Tottenham Court Road Station to 32 Rose Street, London WC2E 9ET



Tottenham Court Road is a step-free station. The journey is approximately 0.4 miles.  
Please call 020 7557 6700 if you require further assistance.

START: Tottenham Court Road – Leave via Exit 1 onto Charing Cross Road (on your right)



Map of Lifts at TCR.



Exit 1 Lift.



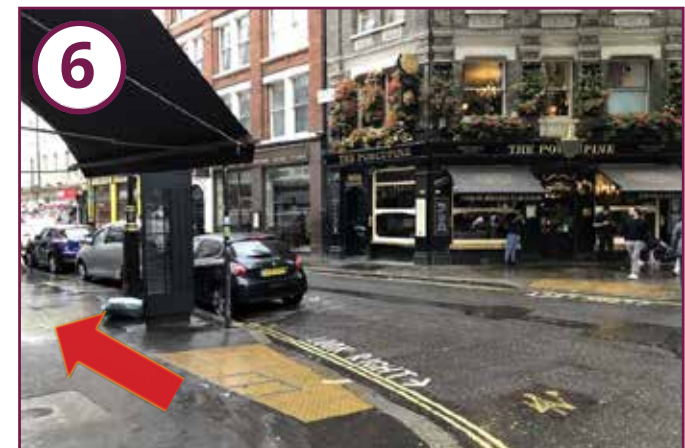
View from Exit 1 onto Charing Cross Road (Right).



Follow Charing Cross Road 100 Yards (passing the Phoenix Theatre).



Continue straight across the crossroads (the Shake Shack will be on your left).



Turn left at The Porcupine and continue onto Great Newport Street.



# Route from Tottenham Court Road Station to 32 Rose Street, London WC2E 9ET



Walk straight across the crossroads onto Garrick Street (Five Guys on your left).



Continue on Garrick Street for 30 Yards then turn left onto Floral Street.



Take the first right turn onto Rose street.



Follow the road around the bend, UK Theatre is the first office on your left.



The office is next to the Lamb and Flag pub. Rose Street has large flagstones and cobbles. Entry is via the double glass doors. To enter, press the intercom to communicate with our reception team.

